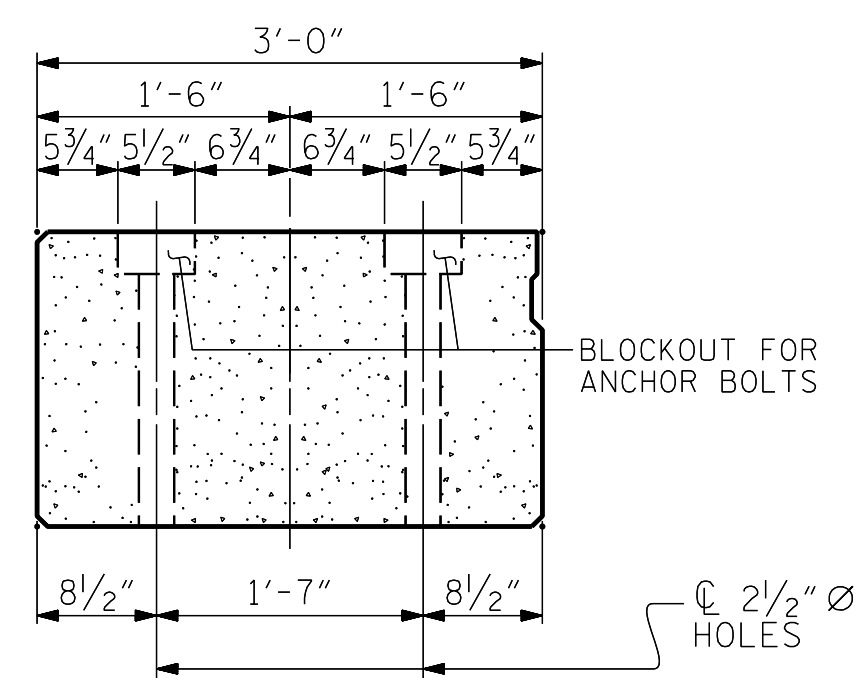
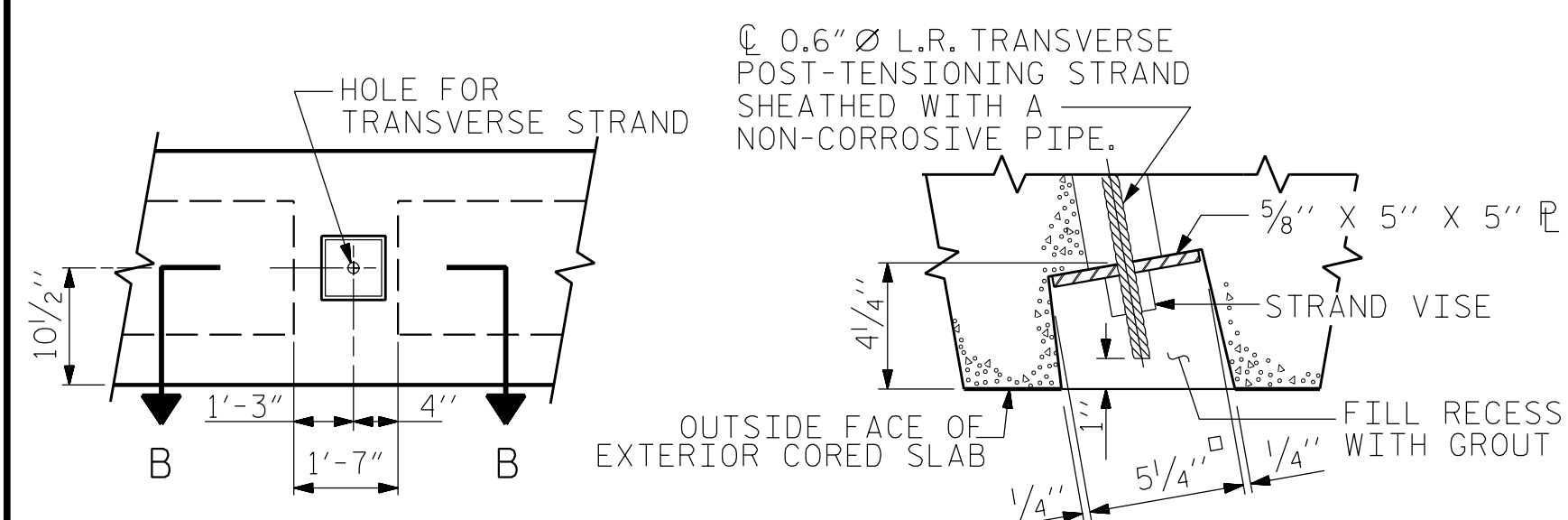
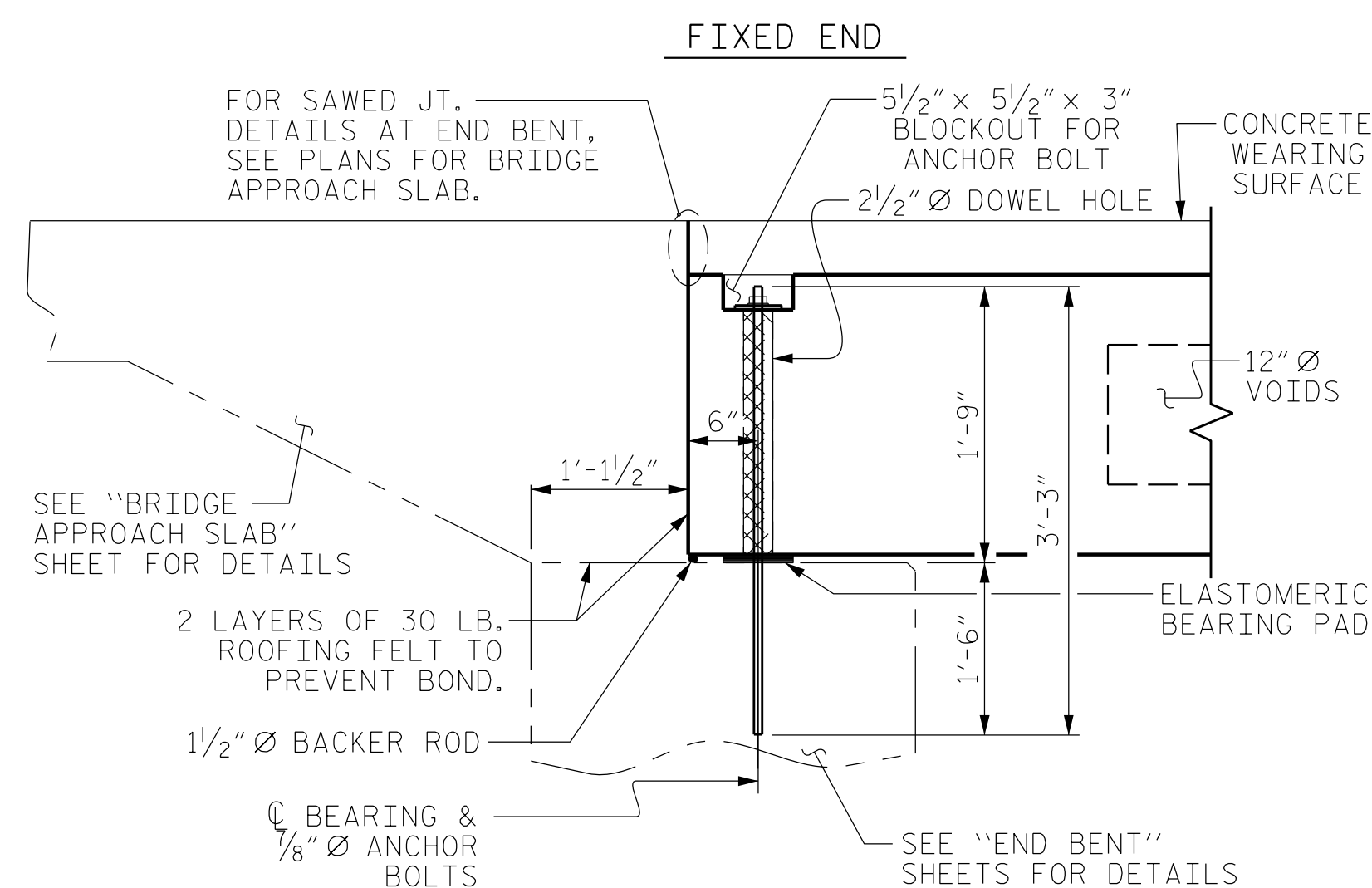
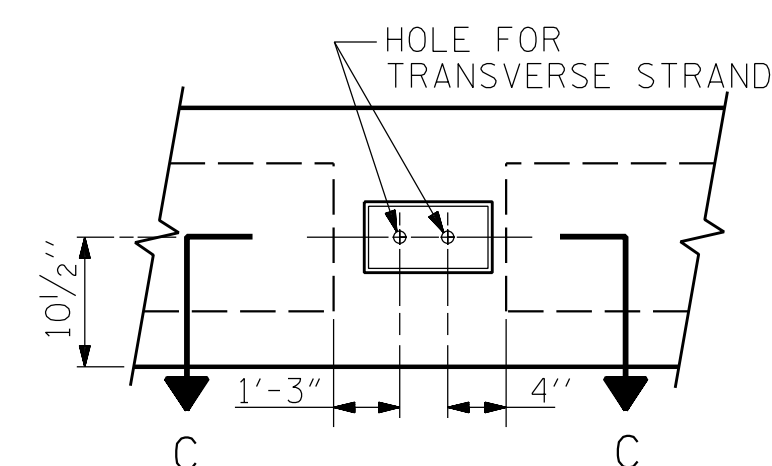


\* - THE MAXIMUM BARRIER RAIL HEIGHT AND WEARING SURFACE THICKNESS IS SHOWN. THE HEIGHT OF THE BARRIER RAIL AND WEARING SURFACE THICKNESS VARIES WHILE THE TOP OF THE BARRIER RAIL FOLLOWS THE PROFILE OF THE GUTTERLINE. FOR RAIL HEIGHT DETAILS AND WEARING SURFACE THICKNESS SEE THE "VERTICAL CONCRETE BARRIER RAIL SECTION" DETAIL.

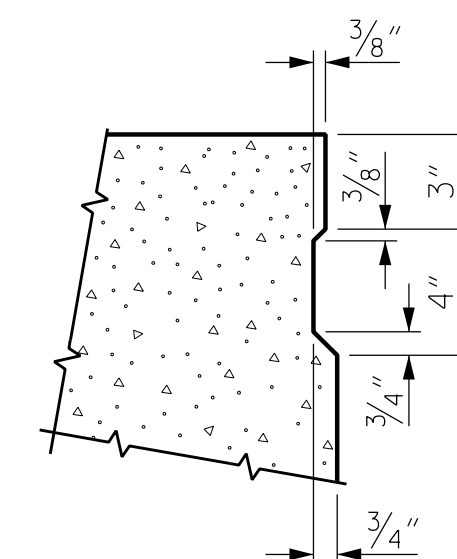


END ELEVATION

SHOWING LOCATION OF BLOCKOUT FOR  
ANCHOR BOLTS AND DOWEL HOLES.

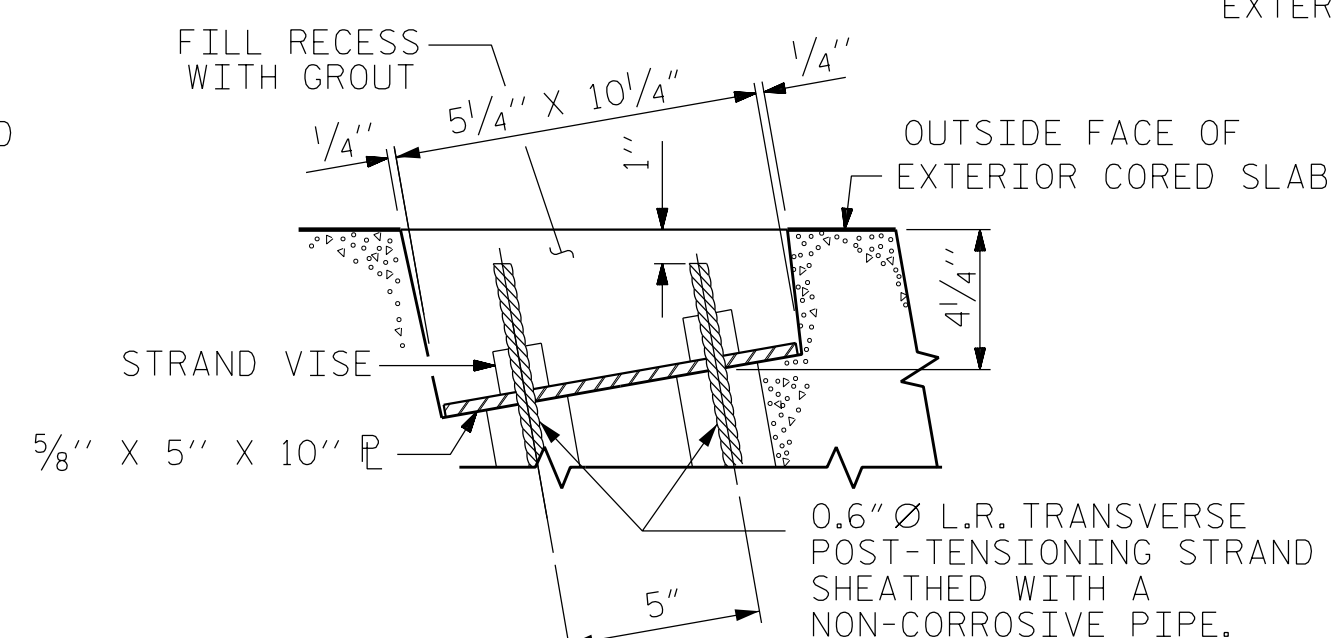


ELEVATION VIEW  
LEFT EXTERIOR CORED SLAB  
(TYPE I UNIT)

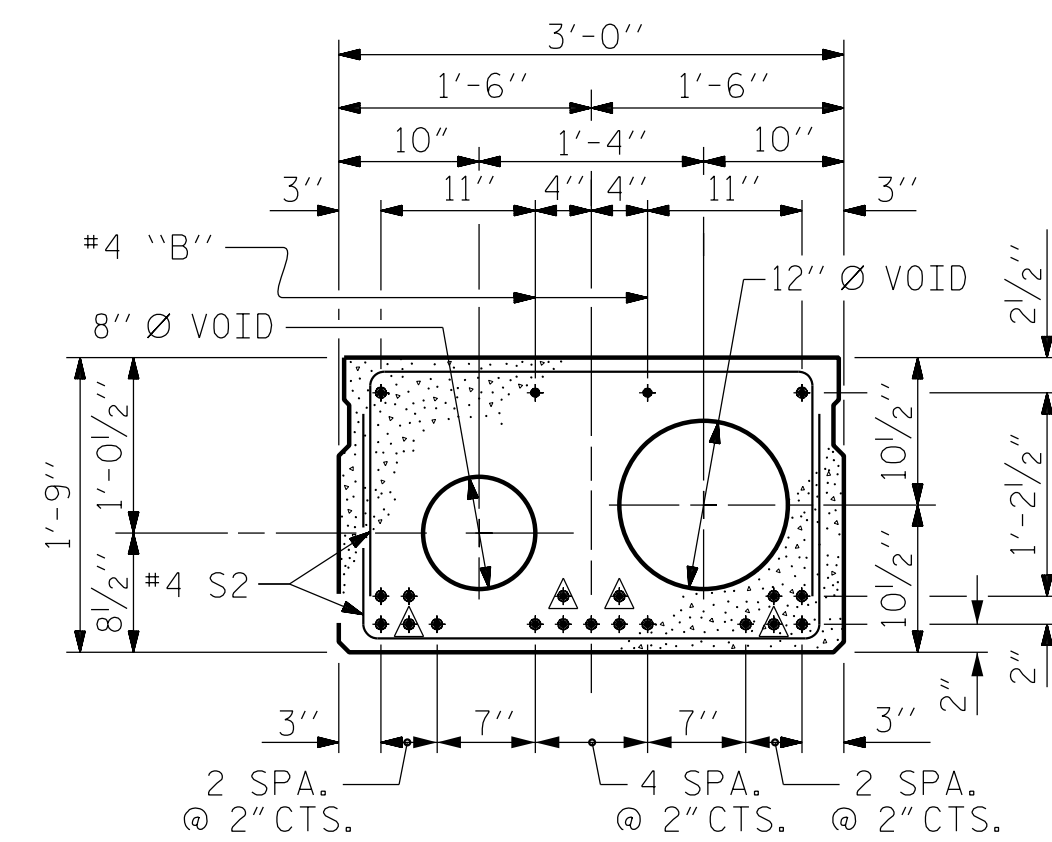


## SHEAR KEY DETAIL

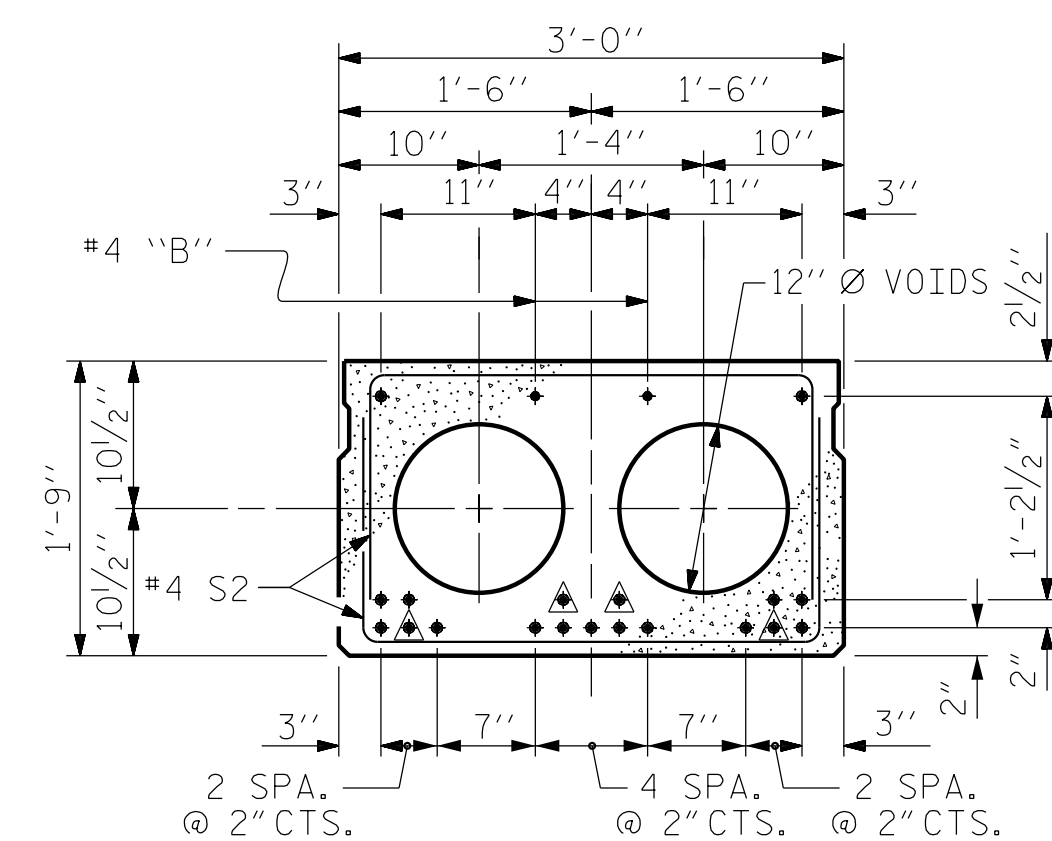
NOTE: OMIT SHEAR KEY ON OUTSIDE FACE  
OF EXTERIOR CORED SLABS.



SECTION C-C  
(TYPE I UNIT)

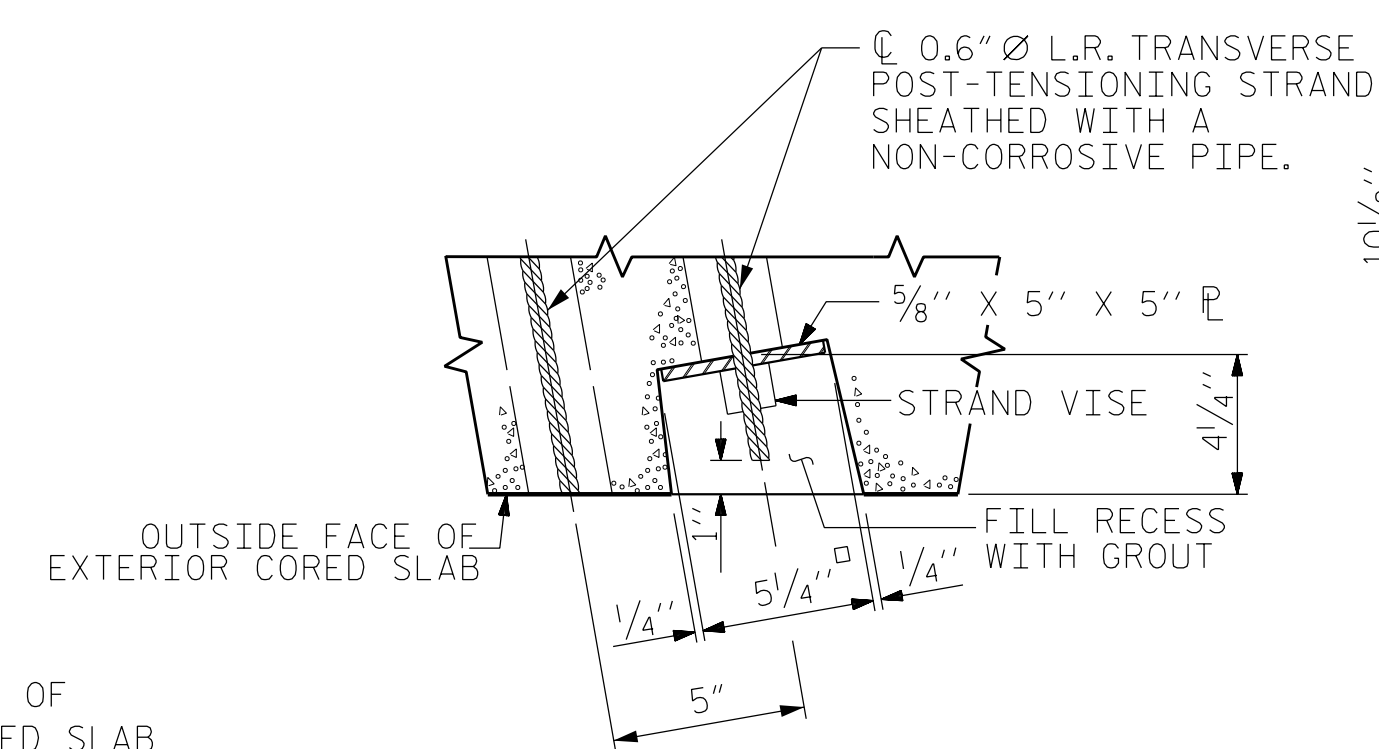


INTERIOR SLAB SECTION  
(50' & 55' UNIT)(TYPE III)  
(19 STRANDS REQUIRED)

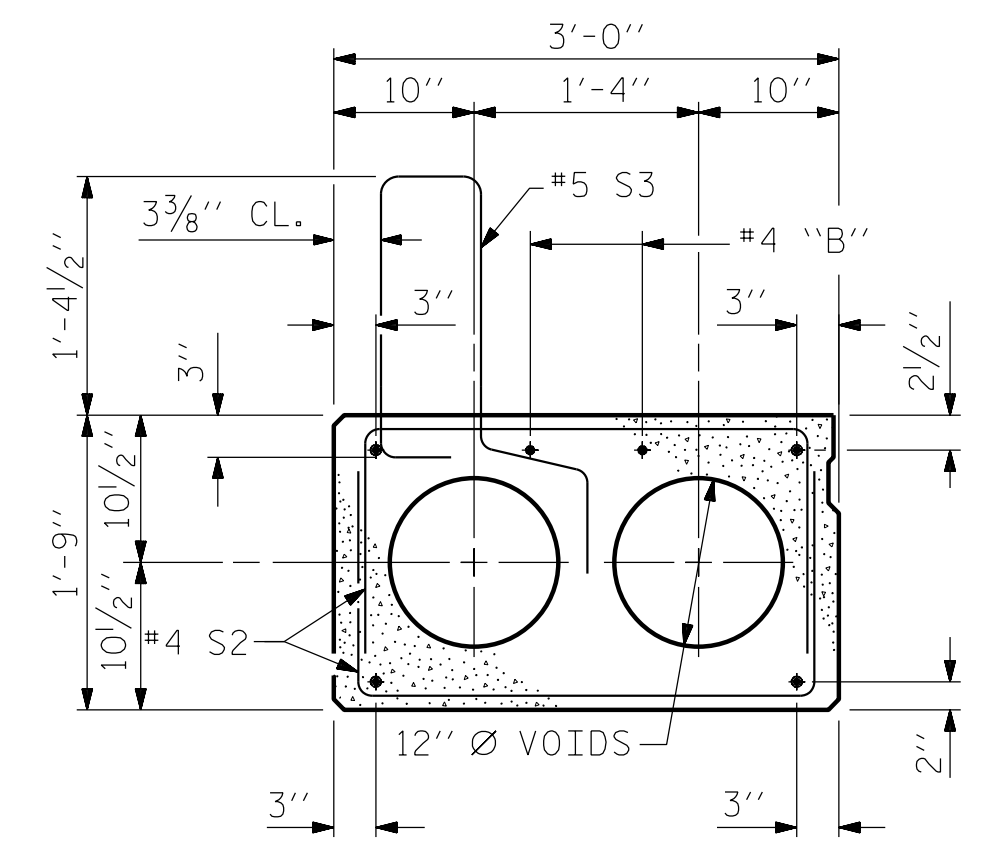


INTERIOR SLAB SECTION  
(50' & 55' UNIT)(TYPE II & V)  
(19 STRANDS REQUIRED)

0.6'' Ø LOW  
RELAXATION STRAND LAYOUT



SECTION D-D  
(TYPE III UNIT)



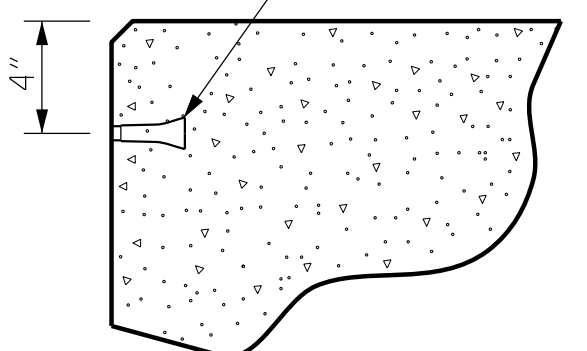
EXTERIOR SLAB SECTION  
(TYPE I & VI)

(FOR PRESTRESSED STRAND LAYOUT, SEE  
INTERIOR SLAB SECTION - TYPE II & V)

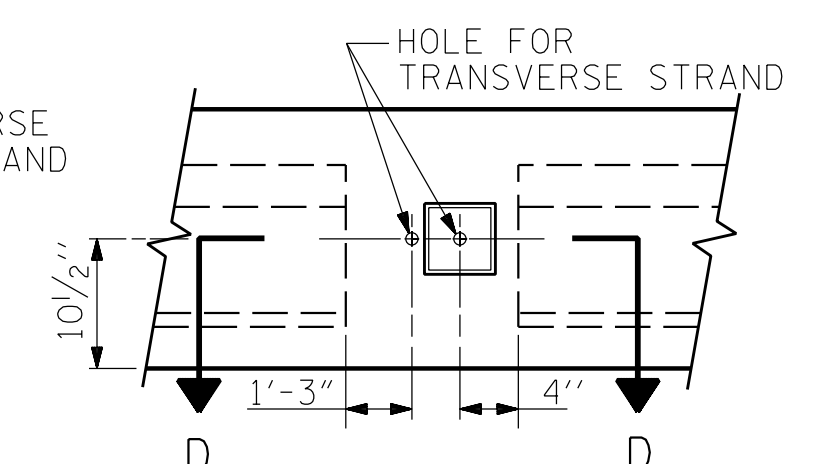
 BOND SHALL BE BROKEN ON THESE STRANDS FOR A DISTANCE OF 6'-0" FROM END OF CORED SLAB UNIT. SEE STANDARD SPECIFICATIONS, ARTICLE 1078-7.

## DEBONDING LEGEND

PERMITTED THREADED INSERT  
CAST IN OUTSIDE FACE OF  
EXTERIOR UNIT AND  
RECESSED  $\frac{3}{8}$ " SIZE TO BE  
DETERMINED BY  
CONTRACTOR. →



THREADED INSERT DETAIL



ELEVATION VIEW  
INTERIOR CORED SLAB  
(TYPE III UNIT)

PROJECT NO. BP14.R006

POLK COUNTY

STATION: 12+92.50

SHEET 1 OF 4

STATE OF NORTH CAROLINA

RALEIGH

STANDARD  
3'-0" X 1'-9"  
PRESTRESSED CONCRETE  
CORED SLAB UNIT

REVISIONS						SHEET NO. S-9
NO.	BY:	DATE:	NO.	BY:	DATE:	
1			3			TOTAL SHEETS 20
2			4			

STD. NO. 21" PCS2-33-60S

DESIGN ENGINEER OF RECORD: R. C. LARSON	DATE : 6/23
ASSEMBLED BY : R. C. LARSON	DATE : 10/22
CHECKED BY : J. M. DAVIS	DATE : 5/23
DRAWN BY : DGE 5/09	
CHECKED BY : BCH 6/09	

PLANS PREPARED BY:

**N|V|5**

**NV5 ENGINEERS & CONSULTANTS, INC.**  
3300 REGENCY PARKWAY, SUITE 100  
CARY, NC 27518  
P: 919.851.1912      [www.NV5.com](http://www.NV5.com)  
NC License # F-1333

**DOCUMENT NOT CONSIDERED FINAL  
UNLESS ALL SIGNATURES COMPLETED**

